

FELLONI[®] TECPRO[®]

UNPRECEDENTED
PRICE / VALUE



“LED HIGH-PERFORMANCE LIGHT” DAYLIGHT, TUNGSTEN OR BICOLOR

IN COMPARISON TO THE MAIN COMPETITIVE PRODUCT:

- 30% more light in Standard version; even more in High-Output version
- 50% less power consumption: 24W instead of 50W
- Improved color rendition: CRI up to 84 instead of 74
- Distance diffuser⁽¹⁾ reduces glare noticeably; identical light output with this diffuser in comparison to the main competitive product without diffuser
- AC Adapter⁽¹⁾
- Magnetic front frame for filter holder strips
- Rainproof
- Power Input:
 - Felloni Standard: AC 100-240 VAC, V-Mount, D-Tap and Sony NPF or optional for Anton/Bauer Mount (TP-LONI-ABM).
 - Felloni High output: AC 100-240 VAC, V-Mount, D-Tap or optional for Anton/Bauer Mount (TP-LONI-ABM). On High output and Bicolor NPF mount is deactivated due to higher consumption than NPF battery can provide.
- Standard dimmer module (on board). Removable for use with 2.5 m / 8' cable⁽¹⁾ as hand dimmer.
- Can be upgraded with LCD or DMX module.
A wireless dimming module is available.

SPECIFICATION:

Power inputs: AC: 100-240 VAC ■ DC: V-Mount or Anton/Bauer Mount: 10-16,8 VDC ■ DC in: 10-16.8 VDC, NPF in: 5.8-8.4 VDC
Standard version: 324 LEDs **Size of light head with yoke:** **Weight:** 2 kg / 4.4 lb
Size of light head: 30.4x30.4x7.6 cm / 12x12x3" 38x35.2x7.6 cm / 15x13.9x3" **Weight with all accessories:** 2.5 kg / 5.5 lb

OTHER VERSIONS:

- Felloni High Output – 576 LEDs – more than double the light output in comparison to the main competitive product
- Felloni Bicolor Standard – 324 LEDs – continuously adjustable from daylight to tungsten with LCD indicator, dimmable
- Felloni Bicolor High Output – 576 LEDs – from 3200K to 5600K in fine steps adjustable and dimmable
- Felloni Low Profile – for low ceilings; angle of light axis: 45° (center beam)

ALL VERSIONS AVAILABLE WITH BEAM ANGLE: 15° / 30° / 50°

(1) included in standard package

FELLONI LIGHTHEADS



STANDARD 324 LEDs

30% more light output as comparable light heads in standard version

Available as:

TP-LONI- D50 / D30 / D15

Daylight - 50° / 30° / 15°

TP-LONI- T50 / T30 / T15

Tungsten - 50° / 30° / 15°

TP-LONI- BI50 / BI30 / BI15

Bicolor - 50° / 30° / 15°



HIGH OUTPUT 576 LEDs

Light output 2750 lx at 1 m (approx. 2x in comparison to the main competitive product)

Available as:

TP-LONI- D50HO / D30HO / D15HO

Daylight - 50° / 30° / 15°

TP-LONI- T50HO / T30HO / T15HO

Tungsten - 50° / 30° / 15°

TP-LONI- BI50HO / BI30HO / BI15HO

Bicolor - 50° / 30° / 15°



LOW PROFILE 324 LEDs

Angle of light axis: 45°

Available as:

TP-LONI- LPD50 / LPD30 / LPD15

Standard - Daylight - 50° / 30° / 15°

TP-LONI- LPT50 / LPT30 / LPT15

Standard - Tungsten - 50° / 30° / 15°

TP-LONI- LPBI50 / LPBI30 / LPBI15

Standard - Bicolor - 50° / 30° / 15°

All light heads include AC power supply, diffuser, metal filter holder strips and 2.5 m / 8' dimmer connection cable.

FELLONI LIGHTHEAD EXTENSIONS



SOFTBOX

TP-LONI-SBX42

Foldable softbox with 2 front diffusers (interchangeable, 38 x 38 cm)

- High transmission diffuser
- Soft/soft diffuser for very pleasing, even and smooth light
- 2 removable side flags



GRID

TP-LONI-SBXGRID40

Grid - 40° for front of foldable Felloni Softbox



HONEYCOMB

TP-LONI-HON30

Honeycomb grid limits exit angle of Felloni, gives the light more direction and character, very useful when Felloni is used as backlight.

Attaches to the front of the Felloni light head by magnets.



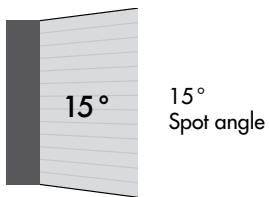
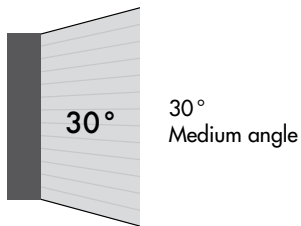
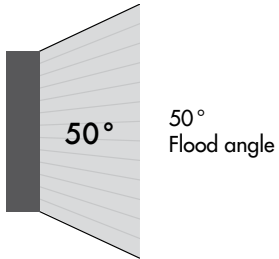
DOUBLE YOKE

Double yoke to mount 2 Fellonis side by side

FELLONI DATA

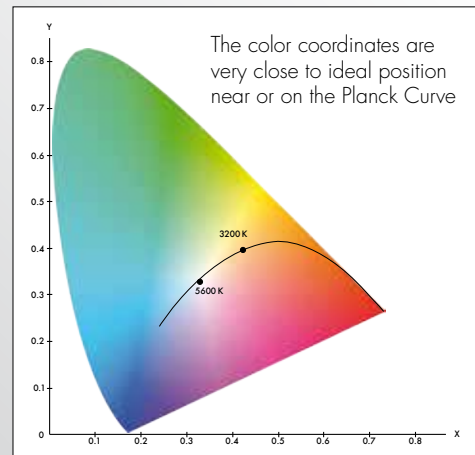
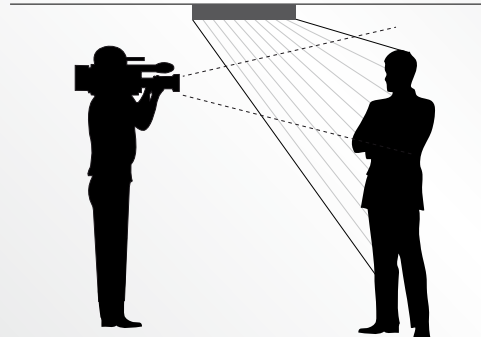
Beam Angle of Exit

All Felloni light heads available with 3 beam angles of exit:



Low Profile Version

Ideal for low ceiling in webcast and teleconferencing studios. Other mounting options available, including ceiling panels. LEDs are tilted at 45° off axis.



Standard – 50° Daylight/Tungsten	High Output – 50° Daylight/Tungsten	Bicolor	Bicolor High Output	Low Profile – 30° Daylight/Tungsten
----------------------------------	-------------------------------------	---------	---------------------	-------------------------------------

Lux at 1 m (≈ 3') w/out Diff. (!)	1790	2750	990	1520	3430
Lux at 1 m (≈ 3') with Diff. (*)	1340	2100	743	1140	1560

Lux at 2 m (≈ 6.5') w/out Diff. (*)	448	688	248	380	860
Lux at 2 m (≈ 6.5') with Diff. (*)	335	525	186	285	390

Lux at 3 m (≈ 10') w/out Diff. (*)	199	306	110	169	382
Lux in 3 m mit Diff.	149	233	83	127	173

(*) Lux values refer to daylight version

FELLONI CASES



TPSC1

Soft case for Single Felloni and accessories also fits one DST stand



TPSC3-0

Soft case for three Fellonis and two soft boxes, no stands



TPSC-DST

Standbag fit 3 DST lighting stands



TPHC3

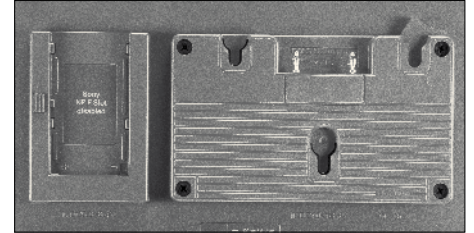
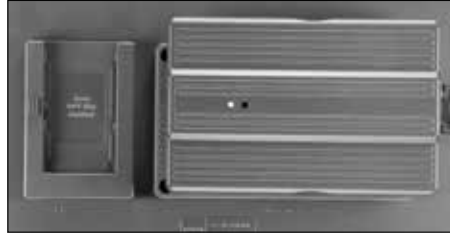
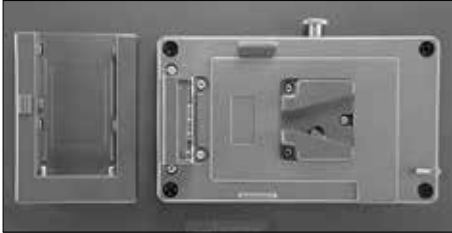
Hard case, to fit 3 Fellonis and accessories – no stands

FELLONI POWER OPTIONS

TYPES OF BATTERY MOUNTING

Power supply options included in each Felloni standard package:

- V-Mount for camera batteries, also for new AC adapter. Optional: Anton/Bauer battery adapter
- NPF battery shoe (deactivated in the high output and bicolor versions)
- DC external input 10-16.8 V



FELLONI DIMMER OPTION

STANDARD DIMMER (1)



Manual operation of dimmer included with the light head.

DIGITAL LCD DISPLAY



TP-LONI-DIM-NC

Included with all Bicolor light heads.
(Optional with Daylight and Tungsten light heads.)

DMX-DIMMING MODULE



TP-LONI-DIM-DMX

This module is compatible and interchangeable with standard dimmers and LCD dimmers. Local dimming via buttons; LCD display for intensity.

DIMMER CONNECTED BY CABLE



Standard or digital LCD display dimmer connected with a cable. Easier to use when light head is placed high on a stand.

WIRELESS REMOTE CONTROL UNIT



NEW: optional wireless remote control unit



Dedo Weigert Film GmbH

Karl-Weinmair-Straße 10
D-80807 Munich, Germany

Phone: +49-(0)89 - 356 16 01
Fax: +49-(0)89 - 356 60 86

info@dedoweigertfilm.de
www.dedoweigertfilm.de



Dedotec USA, Inc.

48 Sheffield Business Park
Ashley Falls, MA 01222

Phone: (413) 229 - 2550
Fax: (413) 229 - 2556

info@dedolight.com
www.dedolight.com